

Frameless single-isocenter intensity modulated stereotactic radiosurgery for simultaneous treatment of multiple intracranial metastases

Steven K. M. Lau¹, Xiao Zhao¹, Ruben Carmona¹, Erik Knipprath², Daniel R. Simpson¹, Sameer K. Nath¹, Gwe-Ya Kim¹, Jona A. Hattangadi¹, Clark C. Chen^{2*}, Kevin T. Murphy^{1*}

¹Department of Radiation Medicine and Applied Sciences, ²Department of Surgery, Division of Neurosurgery, Moores University of California San Diego Cancer Center, La Jolla, California, USA

*These authors contributed equally to this work.

Correspondence to: Steven K. M. Lau, M.D., Ph.D. Radiation Oncology PET/CT Center Moores UCSD Cancer Center 3855 Health Sciences Drive, MC 0843 La Jolla, California 92093-0843, USA. Email: steven.lau@utsouthwestern.edu.

Purpose: Stereotactic radiosurgery (SRS) is well accepted treatment for patients with intracranial metastases, but the role of frameless radiosurgery is not well defined. Here, we describe our clinical experience applying a novel single-isocenter technique to frameless intensity modulated stereotactic radiosurgery (IMRS) for simultaneous treatment of multiple intracranial metastases.

Methods and materials: Between 2006 and 2012, 100 consecutive patients received frameless IMRS for multiple intracranial metastases using a single, centrally-located isocenter. Among these, 29 patients were treated for progressive or recurrent intracranial disease. A total of 465 metastases (median, 4 per patient, range, 2-18) were treated to a median dose of 20 Gy (range, 15-50 Gy). Follow-up including clinical examination and magnetic resonance imaging (MRI) occurred every 3 months.

Results: Median follow-up for all patients was 4.3 months (range, 0.2-58.3 months), with 83 patients (83.0%) followed until their death. For the remaining 17 patients alive at the time of analysis, median follow-up was 9.2 months (range, 2.2-58.3 months). Overall survival at 6 months was 49.5% [95% confidence interval (CI), 35.3-63.6%]. Local control at 6 and 12 months was 88.9% (95% CI, 79.1-98.6%) and 81.5% (95% CI, 65.2-97.7%), respectively. Regional failure was observed in 39 patients (39%), and 25 patients (25%) received salvage therapy. Grade 3 or greater treatment-related toxicity was observed in 4 patients (4%) and included intracranial hemorrhage, seizure, and radionecrosis. Median total treatment time was 17.2 minutes (range, 2.8-55.3 minutes).

Conclusions: Single-isocenter IMRS for multiple intracranial metastases can produce clinical outcomes comparable to those of conventional radiosurgery techniques.

Keywords: Frameless; radiosurgery; single-isocenter

Submitted May 06, 2014. Accepted for publication Jun 25, 2014.

doi: 10.3978/j.issn.2218-676X.2014.07.01

View this article at: <http://dx.doi.org/10.3978/j.issn.2218-676X.2014.07.01>

Introduction

Stereotactic radiosurgery (SRS) is a well-established therapy for the management of intracranial metastasis (1). Over half of cancer patients who develop brain metastasis present with more than one lesion (2), and SRS is increasingly used in patients with multiple lesions. Importantly, randomized

controlled trials have demonstrated the efficacy of SRS for the treatment of one to three (3), two to four (4), and one to four (5) metastases. Moreover, recent retrospective studies have demonstrated the benefit of SRS for managing greater than four lesions from various primary tumor types (6-8).

SRS allows for delivery of large doses to well-defined target

volumes by generating highly conformal dose distributions. Several forms of SRS have been developed over the past few decades, and each type varies in how it achieves precise target irradiation. Gamma Knife (Elekta, Stockholm, Sweden), CyberKnife (Accuray Inc., Sunnyvale, California), and conformal radiotherapy delivered by linear accelerators (linacs) use one or more isocenters and typically involve patient repositioning during a single session and sequential treatment of multiple lesions (9). More recently, intensity modulated SRS (IMRS) has been utilized for its ability to vary the intensity of small beams that are segmented by a multileaf collimator (9,10). This technique enhances dose conformity, especially for large and irregular lesions, and decreases dose to healthy brain tissue (11,12). As with prior SRS techniques, IMRS for patients with multiple intracranial metastases has typically been delivered in a sequential fashion (12).

Compared to traditionally fractionated radiotherapy, SRS for the treatment of multiple lesions provides the entire dose in a single fraction on a single day. However, more time is required to deliver a SRS fraction. Moreover, separate lesions are typically treated in sequential fashion using discrete isocenters, with treatment time proportionate to the number of isocenters and lasting up to several hours. Patient tolerance of SRS becomes more important with longer treatment sessions since it may be uncomfortable to lay immobilized for extended periods. In addition, lengthy treatment times may disrupt treatment schedules since a single patient occupies a treatment machine for several hours, particularly at facilities without a dedicated SRS machine.

With intensity modulation, it is now possible to design SRS treatment plans for multiple intracranial metastases using a single isocenter. In doing so, one can simultaneously treat multiple targets without requiring isocenter shifts, thereby significantly reducing treatment times (13). Such an approach is advantageous to both patients and clinicians in busy clinics. We recently published on the dosimetric implications of our single-isocenter IMRS technique and demonstrated that uniform target coverage with minimal excessive dose to normal tissues is feasible (14-17). However, clinical outcomes are not well described. In this report, we present our clinical experience using this approach in patients with multiple intracranial metastases.

Methods and materials

Retrospective review of radiation oncology records was performed after obtaining institutional review board approval. This report includes all 100 patients consecutively

Characteristic	Value
Patients, n	100
Lesions, n	465
Lesions per patient	
Median [range]	4 [2-18]
2-4	60
5-8	29
≥ 9	11
Sex, n	
Male	42
Female	58
Median age, [range] years	56 [24-89]
Primary tumor	
Lung	43
Breast	26
Melanoma	21
Renal	6
Other	4
Median tumor size, [range] mm	20 [5-43]
Recursive partitioning analysis class	
I	7
II	47
III	46
Median dose, Gy [range]	20 [15-50]
Fractions	
Median [range]	1 [1-5]
1	88
≥ 2	12

treated with single-isocenter, frameless IMRS for multiple intracranial metastases between March 2006 and March 2012 at a single institution. Patients with intracranial metastatic disease that was histologically confirmed at either the primary or metastatic site were eligible for treatment if they could lie still and tolerate simulation.

Patient characteristics are summarized in *Table 1*. Patients had a median of 4 intracranial metastases (range, 2-18). A total of 465 intracranial metastases were treated in a median of 1 fraction (range, 1-5) to a median dose of 20 Gy (range, 15-50 Gy). Twelve patients (12%) were treated with more than one fraction. Of these 12 patients, 6 had previously been treated with WBRT. The remaining 88 patients (88%) were treated in a single fraction. The maximum target diameter

as determined by contrast enhanced T1-weighted magnetic resonance imaging (MRI) was less than 4.0 cm in all but two patients—one patient with a 4.0 cm lesion and another with a 4.3 cm lesion. In total, 29 patients were treated for progressive or recurrent intracranial disease after surgical resection, WBRT, or prior SRS. Seventeen patients (17%) received WBRT prior to presentation, while the remaining 83 patients (83%) did not. Salvage therapy was offered to patients with recurrent local disease or new intracranial metastases and consisted of surgical resection, WBRT, or repeated frameless IMRS.

After obtaining informed consent, patients underwent stereotactic-protocol contrast enhanced T1-weighted brain MRI (26 cm field-of-view, 512×512 pixel size, 1.5 mm slice intervals) using a 3.0 Tesla Scanner (General Electric, Fairfield, Connecticut). A detailed description of our patient simulation and setup techniques has been previously published (16). Notably, we have more recently begun immobilizing patients without the use of a bite block in favor of surface image guidance (SIG) in real-time with the AlignRT system (VisionRT Ltd, London, United Kingdom). As previously described, these patients also underwent simulation non-contrast CT for treatment planning purposes (17). Planning target volumes (PTVs) for each lesion were generated by adding a 1 mm margin to each clinical target volume (CTV). Dose was prescribed to the 90% isodose curve relative to a reference point within a lesion. Beam arrangement consisted of 9-13 fields permissive of 30-50% coplanar overlap. Patient position was continuously monitored with SIG, with a beam hold initiated for deviation exceeding a predefined translational threshold of 1-2 mm or a rotational threshold of 1° (17). Volumetric modulated arc therapy was used for 15 patients. Median minimum and maximum PTV coverage was 90% and 113%, respectively.

Patients were routinely seen one week following IMRS for clinical examination. Thereafter, intracranial progression was assessed by physical evaluation and contrast enhanced MRI every 3 months for 18 months, with additional surveillance determined on a case-by-case basis. Treatment response was analyzed by local control, regional control, and overall survival. Local control was defined as the absence of disease progression, with progression radiographically defined as an increase of greater than 25% of the sum of the two largest diameters of the lesion per Revised Assessment in Neuro-Oncology (RANO) criteria (18). Regional control was defined as the absence of new intracranial metastatic disease occurring outside the treatment volume on radiographic

examination. Intracranial status was deemed unknown if radiographic examination had not been obtained by the time of analysis. These patients were excluded from local and regional control analyses but were included in survival analysis. Local control and regional control from the date of treatment were estimated by the Kaplan-Meier method, as was overall survival from the date of diagnosis. Event times were censored at the time of last follow-up for patients without an event at the time of analysis. Toxicity was graded according to the Radiation Therapy Oncology Group scale (19). Statistical analyses were performed using R version 2.15.1 (<http://www.R-project.org>). Separate forward conditional multivariate analyses was performed using Cox proportional hazards regression modeling to assess factors predictive of either survival or local control, as per other SRS reports (6,16). P values for multiple comparisons were adjusted using the Holm method.

Results

All patients were treated with single-isocenter, frameless IMRS. Median treatment time from initial beam on to final beam off was 17.2 minutes (range, 2.8-55.3 minutes). Increasing number of lesions (2-4, 5-8, and ≥9 metastases) was associated with significantly longer median treatment time (16.1, 19.9 and 23.8 minutes, $P=0.008$, respectively). Median total beam-on time was 6.25 minutes (range, 1.8-17.9 minutes).

Median follow-up for all patients was 4.3 months (range, 0.2-58.3 months) with 83 patients (83%) followed until death. For the remaining 17 patients alive at the time of analysis, median follow-up was 9.2 months (range, 2.2-58.3 months).

Overall survival at 6 and 12 months was 49.5% (95% CI, 40.5-60.6%) and 34.1% (95% CI, 25.7-45.2%), respectively (*Figure 1*). No statistically significant difference in overall survival at 12 months was observed between patients with or without prior WBRT ($P=0.72$). Median survival by Radiation Therapy Oncology Group (RTOG) recursive partitioning analysis (RPA) classes I, II, and III patients were 18.2 months (95% CI, 12.3-unable to calculate), 9.3 months (95% CI, 5.1-16.8 months), and 4.1 months (95% CI, 3.7-5.3 months), respectively ($P<0.001$) with corresponding overall survival at 12 months of 83.3%, 42.9% and 11.6%, respectively. Multivariate analysis was performed to assess prognostic factors of decreased mortality including age, gender, Karnofsky performance status (KPS), largest tumor diameter, primary tumor type, number of intracranial metastases, RPA class, and prescription dose. Compared

to RPA class III, RPA classes I [hazard ratio (HR): 0.23, 95% CI, 0.09-0.61, $P < 0.001$] and II (HR: 0.42, 95% CI, 0.26-0.70, $P = 0.003$) were found to be significant prognostic factors for survival. Compared to ≥ 9 intracranial lesions, 2-4 metastases (HR: 0.37, 95% CI, 0.17-0.78, $P = 0.009$) and 5-8 metastases (HR: 0.41, 95% CI, 0.19-0.91, $P = 0.03$) were also associated with prolonged survival. When treated as a binary variable, 2-8 intracranial lesions compared to ≥ 9 lesions was associated with decreased mortality (HR: 0.44, 95% CI, 0.24-0.82, $P = 0.01$).

Eight patients were excluded from local control analysis owing to unknown intracranial status, and the remaining 92 patients (426 lesions) were evaluable for local control. Of this group, 79 patients (86%) and 399 lesions (94%) did not show evidence of local progression. Local control at 6 and 12 months was 88.9% (95% CI, 79.1-98.6%) and 81.5% (95% CI, 65.2-97.7%), respectively (Figure 2). Of the 71 patients (337 lesions) without prior treatment, local control at 6 and 12 months was 89.9% (95% CI, 81.4-99.3%) and 83.9% (95% CI, 71.0-99.2%), respectively (Figure 3). Of this group, 63 patients (91.3%) and 315 lesions (96.6%) were without evidence of local progression at the time of analysis. Multivariate analysis was performed to assess prognostic factors of increased local control. Number of intracranial lesions (2-4 and 5-8 lesions compared to ≥ 9 lesions) was associated with local control (HR 0.14, 95% CI, 0.04-0.44, $P = 0.001$ and HR 0.07, 95% CI, 0.01-0.38, $P = 0.002$, respectively). When treated as a binary variable, 2-8 intracranial lesions compared to ≥ 9 lesions was associated with increased local control (HR 0.15, 95% CI, 0.05-0.50, $P = 0.002$). For the 15 patients with local failure, salvage therapy consisted of repeated SRS (5 patients) or no further treatment (12 patients).

Intracranial failure outside the treatment volume was observed in 39 patients (39%). Regional control at 6 and 12 months was 62.7% (95% CI, 51.8-76.0%) and 47.9% (95% CI, 35.9-64.1%), respectively (Figure 4). For the 43 patients with a documented failure, the site of first failure was primarily outside the treatment volume (31 patients) rather than only local (5 patients) or simultaneously within and outside the treatment volume (7 patients). Interestingly, no statistically significant difference in regional failure was observed between patients previously treated with or without WBRT (57.7% vs. 46.0% at 12 months, respectively, $P = 0.16$). Salvage therapy for new intracranial metastases occurring outside of the treatment volume was received by 25 patients (25%) and consisted of repeated SRS (11 patients), WBRT (11 patients), surgical resection

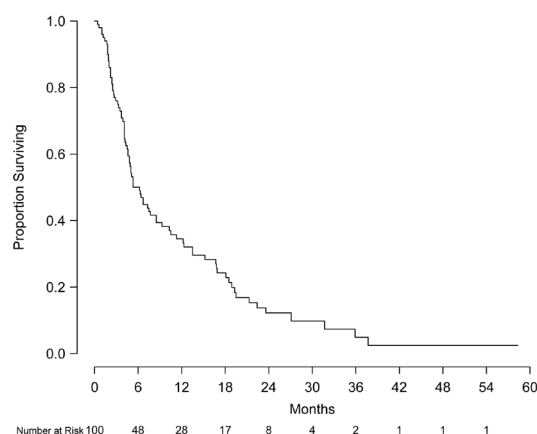


Figure 1 Kaplan-Meier estimate of overall survival.

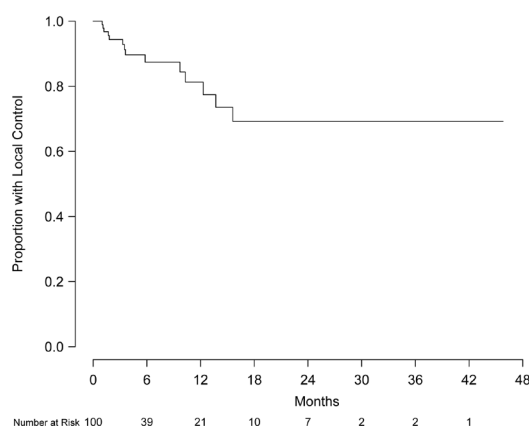


Figure 2 Kaplan-Meier estimate of local control.

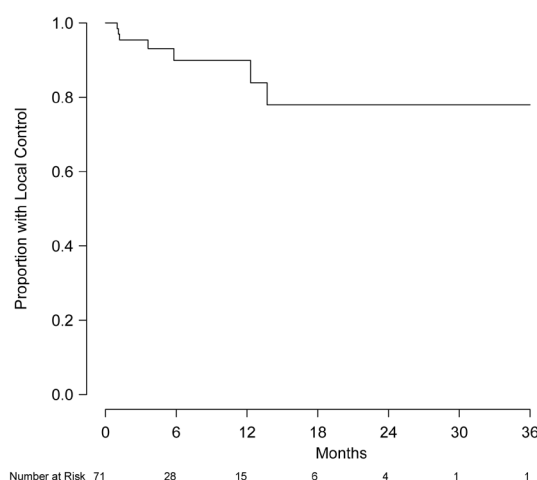


Figure 3 Kaplan-Meier estimate of local control for patients without prior treatment.

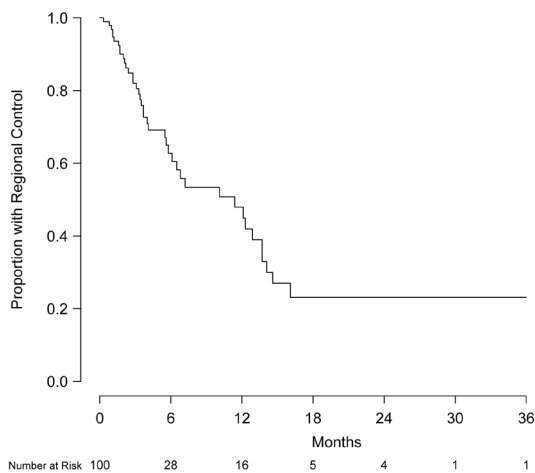


Figure 4 Kaplan-Meier estimate of regional control.

(1 patient), and multimodality therapy (2 patients).

Acute treatment-related toxicity occurred in six patients (6%). Two patients suffered acute grade 3 events; one developed hemiparesis secondary to hemorrhage of a treated lesion 8 days after radiotherapy, and another experienced weakness secondary to edema responsive to steroids but requiring hospitalization for initial management. Late treatment-related toxicity was observed in four patients (4%). Late grade 3 toxicity occurred in two patients. One patient developed radionecrosis requiring corticosteroids and surgical intervention after receiving 20 Gy to two lesions that were 2.9 and 2.7 cm in largest diameter. Another patient developed seizures secondary to biopsy-proven radionecrosis requiring hospitalization for initial management 18 months after receiving 18 Gy to three lesions that were 2.4, 1.7 and 0.2 cm in largest diameter. No grade 4 acute or late events were observed. Mean dose to normal brain was 3.4 Gy, and no discernible relationship between dose to normal brain and toxicity was observed.

Discussion

SRS has been used for decades in the treatment of intracranial metastases, with separate lesions traditionally treated sequentially and treatment duration proportional to the number of isocenters used. With IMRS, it is possible to simultaneously treat multiple intracranial metastases using a single isocenter, thereby minimizing treatment time. However, clinical outcomes of this novel technique are not well described. Here, we report to our knowledge the largest clinical series of single-isocenter frameless SRS for

multiple intracranial metastases.

A significant advantage of our technique is reduced treatment time, particularly in comparison to frame-based strategies. In this series, a median of 4 lesions was treated in a median of 17.2 minutes with a median beam-on time of 6.25 minutes. Although treatment time increased with number of intracranial metastases, patients with ≥ 9 lesions were treated using a single isocenter in a median of only 23.8 minutes. In comparison, a recent efficiency analysis reported a median treatment time of 37.8 minutes for four isocenters using linac-based SRS, with total time increasing as a function of number of isocenters (13). Moreover, treatment times with Gamma Knife for multiple intracranial lesions may last several hours with median beam-on time reported to be about 50 minutes (16). Given its reduced treatment time, a noninvasive, single-isocenter approach to IMRS for multiple lesions is not only feasible but appealing to both patients and providers in high volume clinics.

Accuracy and precision are critical for frameless treatment delivery. Importantly, SIG IMRS has been demonstrated to have excellent accuracy, with preclinical results comparable to cone beam computed tomography and infrared marker tracking (20-22). However, the clinical efficacy of this approach is not well described. In the current study, we observed local control at 12 months in 81.5% of patients, and 94% of lesions in this series were without evidence of progression at the time of analysis. Furthermore, 71% of patients presented *de novo* without prior treatment for intracranial disease. For these patients, local control at 12 months was 83.9%, with 96.6% of lesions without evidence of progression at the time of analysis. This compares favorably to both frame-based and frameless series. Published series of frame-based SRS for intracranial metastasis consistently demonstrate local control at 12 months ranging from 64% to 90% (6,23-27). Similar local control rates have been published with frameless approaches (28-30). Therefore, our single-isocenter approach to the simultaneous treatment of multiple lesions was associated with reduced treatment time but not diminished local control.

The role of SRS in the initial management for patients with multiple brain metastases is debated. One concern with upfront SRS is the possibility of missing occult micrometastases outside the treatment volume. Several retrospective series of SRS for intracranial metastasis have reported regional failure at 12 months ranging from 40% to 64% (6,26,27,31). In the present study, intracranial failure outside the treatment volume at 12 months was 47.9%. At the time of analysis, 25% of patients had received salvage

therapy for regional failure, with treatment most frequently consisting of additional SRS. Therefore, although regional failure is a significant concern, additional SRS is a feasible approach to management.

In addition to regional failure, treatment-related toxicity is a significant consideration in managing intracranial disease. For example, although WBRT treats micrometastases, it has been associated with both subjective and objective neurocognitive decline (32,33). Meanwhile, published series of SRS using multiple isocenters support low rates of toxicity ranging from 5-15% (5,26,27,29,34,35). Comparable to other series, acute and late grade ≥ 3 treatment-related toxicities were uncommon in this study at 2% and 2%, respectively. Thus, single-isocenter IMRS was associated with low toxicity and ultimately decreased the risk of neurocognitive decline in the majority of patients (61%) who remained free of failure outside the treatment volume.

Prognosis for patients with intracranial metastasis is poor. Median survival time in retrospective series of both frame-based and frameless SRS is less than 1 year (7,27-29,31). In randomized trials, overall survival at 12 months ranges from 28-45% with SRS alone (5,34). Overall survival of 34.1% at 12 months in this series is comparable to published data. Consistent with other studies, the number of intracranial lesions was inversely correlated with survival (35-37). Therefore, our single-isocenter approach does not appear to come at the cost of inferior outcomes.

As cancer therapies become more effective and the prognosis of patients with brain metastasis improves, treatment-related toxicity and patient quality of life become more important. Given its relatively low toxicity profile, SRS is an appealing option for the initial treatment of intracranial lesions. Moreover, single-isocenter frameless IMRS for the simultaneous treatment of multiple intracranial metastases appears to produce clinical outcomes comparable to conventional frame-based SRS techniques with the advantages of a noninvasive approach and shortened treatment time.

While our data is promising, its conclusions are limited. As a retrospective study from a single institution, this series is susceptible to all the inherent biases and shortcomings of such analyses. Ultimately, a prospective study would best assess the role of single-isocenter frameless IMRS for multiple intracranial metastases.

Acknowledgements

Funding: This work was supported in part by National

Institutes of Health grant PHSGM07198 (UCSD Medical Scientist Training Program). The funders had no role in study design, data collection and analysis, decision to publish, or preparation of the manuscript. This manuscript, in part, was presented at the 55th Annual Meeting of the American Society for Therapeutic Radiology and Oncology (ASTRO), Atlanta, GA, September 2013.

Disclosure: K. T. M. has received honoraria from Varian Medical Systems for giving lectures. The authors declare no conflict of interest.

References

1. Suh JH. Stereotactic radiosurgery for the management of brain metastases. *N Engl J Med* 2010;362:1119-27.
2. Delattre JY, Krol G, Thaler HT, et al. Distribution of brain metastases. *Arch Neurol* 1988;45:741-4.
3. Andrews DW, Scott CB, Sperduto PW, et al. Whole brain radiation therapy with or without stereotactic radiosurgery boost for patients with one to three brain metastases: phase III results of the RTOG 9508 randomised trial. *Lancet* 2004;363:1665-72.
4. Kondziolka D, Patel A, Lunsford LD, et al. Stereotactic radiosurgery plus whole brain radiotherapy versus radiotherapy alone for patients with multiple brain metastases. *Int J Radiat Oncol Biol Phys* 1999;45:427-34.
5. Aoyama H, Shirato H, Tago M, et al. Stereotactic radiosurgery plus whole-brain radiation therapy vs stereotactic radiosurgery alone for treatment of brain metastases: a randomized controlled trial. *JAMA* 2006;295:2483-91.
6. Bhatnagar AK, Flickinger JC, Kondziolka D, et al. Stereotactic radiosurgery for four or more intracranial metastases. *Int J Radiat Oncol Biol Phys* 2006;64:898-903.
7. Hunter GK, Suh JH, Reuther AM, et al. Treatment of five or more brain metastases with stereotactic radiosurgery. *Int J Radiat Oncol Biol Phys* 2012;83:1394-8.
8. Kim CH, Im YS, Nam DH, et al. Gamma knife radiosurgery for ten or more brain metastases. *J Korean Neurosurg Soc* 2008;44:358-63.
9. Cardinale RM, Benedict SH, Wu Q, et al. A comparison of three stereotactic radiotherapy techniques; ARCS vs. noncoplanar fixed fields vs. intensity modulation. *Int J Radiat Oncol Biol Phys*. 1998;42:431-6.
10. Benedict SH, Cardinale RM, Wu Q, et al. Intensity-modulated stereotactic radiosurgery using dynamic micro-multileaf collimation. *Int J Radiat Oncol Biol Phys* 2001;50:751-8.

11. Pirzkall A, Carol M, Lohr F, et al. Comparison of intensity-modulated radiotherapy with conventional conformal radiotherapy for complex-shaped tumors. *Int J Radiat Oncol Biol Phys* 2000;48:1371-80.
12. Sankaranarayanan V, Ganesan S, Oommen S, et al. Study on dosimetric parameters for stereotactic radiosurgery and intensity-modulated radiotherapy. *Med Dosim* 2003;28:85-90.
13. Lawson JD, Fox T, Waller AF, et al. Multileaf collimator-based linear accelerator radiosurgery: five-year efficiency analysis. *J Am Coll Radiol* 2009;6:190-3.
14. Wang JZ, Rice R, Pawlicki T, et al. Evaluation of patient setup uncertainty of optical guided frameless system for intracranial stereotactic radiosurgery. *J Appl Clin Med Phys* 2010;11:3181.
15. Lawson JD, Wang JZ, Nath SK, et al. Intracranial application of IMRT based radiosurgery to treat multiple or large irregular lesions and verification of infra-red frameless localization system. *J Neurooncol* 2010;97:59-66.
16. Nath SK, Lawson JD, Simpson DR, et al. Single-isocenter frameless intensity-modulated stereotactic radiosurgery for simultaneous treatment of multiple brain metastases: clinical experience. *Int J Radiat Oncol Biol Phys* 2010;78:91-7.
17. Pan H, Cerviño LI, Pawlicki T, et al. Frameless, real-time, surface imaging-guided radiosurgery: clinical outcomes for brain metastases. *Neurosurgery* 2012;71:844-51.
18. Wen PY, Macdonald DR, Reardon DA, et al. Updated response assessment criteria for high-grade gliomas: response assessment in neuro-oncology working group. *J Clin Oncol* 2010;28:1963-72.
19. Cox JD, Stetz J, Pajak TF. Toxicity criteria of the Radiation Therapy Oncology Group (RTOG) and the European Organization for Research and Treatment of Cancer (EORTC). *Int J Radiat Oncol Biol Phys* 1995;31:1341-6.
20. Cerviño LI, Pawlicki T, Lawson JD, et al. Frame-less and mask-less cranial stereotactic radiosurgery: a feasibility study. *Phys Med Biol* 2010;55:1863-73.
21. Peng JL, Kahler D, Li JG, et al. Characterization of a real-time surface image-guided stereotactic positioning system. *Med Phys* 2010;37:5421-33.
22. Cerviño LI, Detorie N, Taylor M, et al. Initial clinical experience with a frameless and maskless stereotactic radiosurgery treatment. *Pract Radiat Oncol* 2012;2:54-62.
23. Sneed PK, Suh JH, Goetsch SJ, et al. A multi-institutional review of radiosurgery alone vs. radiosurgery with whole brain radiotherapy as the initial management of brain metastases. *Int J Radiat Oncol Biol Phys* 2002;53:519-26.
24. Chitapanarux I, Goss B, Vongtama R, et al. Prospective study of stereotactic radiosurgery without whole brain radiotherapy in patients with four or less brain metastases: incidence of intracranial progression and salvage radiotherapy. *J Neurooncol* 2003;61:143-9.
25. Rades D, Bohlen G, Pluemer A, et al. Stereotactic radiosurgery alone versus resection plus whole-brain radiotherapy for 1 or 2 brain metastases in recursive partitioning analysis class 1 and 2 patients. *Cancer* 2007;109:2515-21.
26. Kondziolka D, Kano H, Harrison GL, et al. Stereotactic radiosurgery as primary and salvage treatment for brain metastases from breast cancer. Clinical article. *J Neurosurg* 2011;114:792-800.
27. Rush S, Elliott RE, Morsi A, et al. Incidence, timing, and treatment of new brain metastases after Gamma Knife surgery for limited brain disease: the case for reducing the use of whole-brain radiation therapy. *J Neurosurg* 2011;115:37-48.
28. Kamath R, Ryken TC, Meeks SL, et al. Initial clinical experience with frameless radiosurgery for patients with intracranial metastases. *Int J Radiat Oncol Biol Phys* 2005;61:1467-72.
29. Breneman JC, Steinmetz R, Smith A, et al. Frameless image-guided intracranial stereotactic radiosurgery: clinical outcomes for brain metastases. *Int J Radiat Oncol Biol Phys* 2009;74:702-6.
30. Chen JC, Bugoci DM, Girvigian MR, et al. Control of brain metastases using frameless image-guided radiosurgery. *Neurosurg Focus* 2009;27:E6.
31. Chen X, Xiao J, Li X, et al. Fifty percent patients avoid whole brain radiotherapy: stereotactic radiotherapy for multiple brain metastases: a retrospective analysis of a single center. *Clin Transl Oncol* 2012;14:599-605.
32. Kondziolka D, Niranjan A, Flickinger JC, et al. Radiosurgery with or without whole-brain radiotherapy for brain metastases: the patients' perspective regarding complications. *Am J Clin Oncol* 2005;28:173-9.
33. Chang EL, Wefel JS, Hess KR, et al. Neurocognition in patients with brain metastases treated with radiosurgery or radiosurgery plus whole-brain irradiation: a randomised controlled trial. *Lancet Oncol* 2009;10:1037-44.
34. Kocher M, Soffiotti R, Abacioglu U, et al. Adjuvant whole-brain radiotherapy versus observation after radiosurgery or surgical resection of one to three cerebral metastases: results of the EORTC 22952-26001 study. *J Clin Oncol* 2011;29:134-41.
35. Breneman JC, Warnick RE, Albright RE Jr, et al. Stereotactic radiosurgery for the treatment of brain

- metastases. Results of a single institution series. *Cancer* 1997;79:551-7.
36. Joseph J, Adler JR, Cox RS, et al. Linear accelerator-based stereotaxic radiosurgery for brain metastases: the influence of number of lesions on survival. *J Clin Oncol* 1996;14:1085-92.
37. Alexander E 3rd, Moriarty TM, Davis RB, et al. Stereotactic radiosurgery for the definitive, noninvasive treatment of brain metastases. *J Natl Cancer Inst* 1995;87:34-40.

Cite this article as: Lau SK, Zhao X, Carmona R, Knipprath E, Simpson DR, Nath SK, Kim GY, Hattangadi JA, Chen CC, Murphy KT. Frameless single-isocenter intensity modulated stereotactic radiosurgery for simultaneous treatment of multiple intracranial metastases. *Transl Cancer Res* 2014;3(4):383-390. doi: 10.3978/j.issn.2218-676X.2014.07.01